

TRINITY OFFSHORE PTE LTD

4 Loyang Crescent, Singapore 508979

Tel : (65) 65431000

Fax : (65) 65451000

Email : info@trinityoffshore.com

Website : www.trinityoffshore.com

Co. Reg. No. 199102555 K

250 x 80 x 16ft DECK CARGO BARGE

TRINITY IMAN



Principal Particulars

Built	: 2005
Flag	: Singapore
Classification	: ABS

Principal Dimensions

Length Overall	: 76.20 m
Breadth Overall	: 24.38 m
Depth Moulded	: 4.88 m
Draft Max	: 3.97 m
GRT / NRT	: 2,288T / 686T
Deadweight	: 5,700T
Deck Loading Capacity	: 10.5T/m ²

Deck Fittings

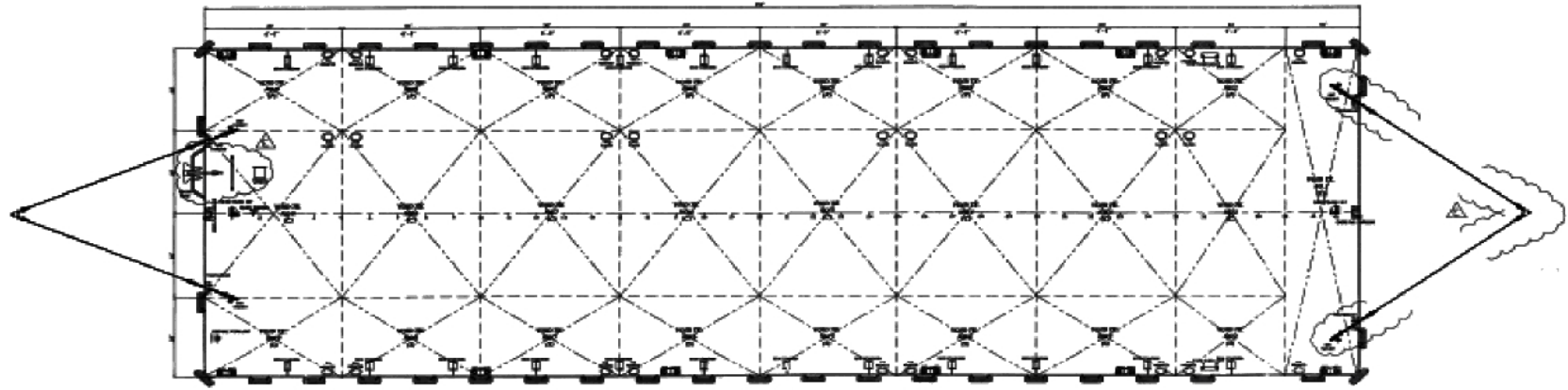
Anchor	: 1 x 800kg Stockless bower
Anchor Winch	: 1 x 10T hand-operated anchor winch
Towing Brackets	: 4 x 30 SWL Schmidt Towing Brackets (P&S)

Cargo Stanchions

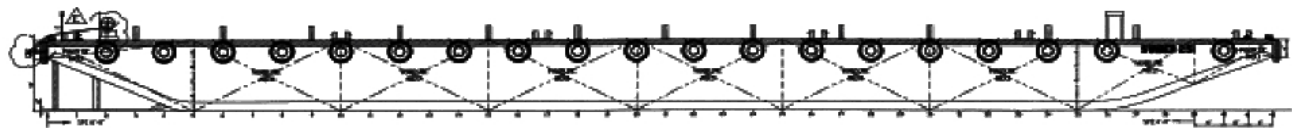
56 x (12" 12" 118kg/m)

Vertical	: 250 x 250 x 73kg/m "I" Beam
Horizontal	: 150 x 150 x 12mm O.A

NOTICE: Particulars are believed to be correct and subject to revision without prior notice. Interested parties must inspect vessel to check on suitability of the Company's equipment. Company has exercised due diligence to ensure that the data contained herein is reasonably accurate. However, the Company does not warrant the accuracy or completeness of the data. In no event shall the Company be liable for any damages whatsoever arising out of the use or inability to use the data contained herein. All optional equipment for Charterers' usage shall be agreed by the Company. Updated as at 10 December 2014.



DECK PLAN



PROFILE

PRINCIPAL	DIMENSION
LENGTH O.A.	250'-0"
BEAM M.L.D.	80'-0"
DEPTH M.L.D.	16'-0"
DECK LOADING	10.5 TON/M ²
ANCHOR	ONE(1) x 800 KGS
WINCH	MANUAL, SUITABLE FOR ANCHOR
ANCHOR WIRES	200FT x 1" ø STEEL WIRES

NOTICE: Particulars are believed to be correct and subject to revision without prior notice. Interested parties must inspect vessel to check on suitability of the Company's equipment. Company has exercised due diligence to ensure that the data contained herein is reasonably accurate. However, the Company does not warrant the accuracy or completeness of the data. In no event shall the Company be liable for any damages whatsoever arising out of the use or inability to use the data contained herein. All optional equipment for Charterers' usage shall be agreed by the Company. Updated as at 10 December 2014.